



pro-line™

# Commercial Blender

With Ice Blade and Sound Cover

BL-1421Q

# User Manual





# Congratulations on your purchase of a Pro-line Commercial Blender.

---

**Note:** Please read through the instructions carefully before using or installing the product and ensure that the manual is kept in a safe place for future reference.



The system must be properly installed and located in accordance with the installation instructions before it is used.

During the set up of this product if you have any questions / comments / issues **DO NOT RETURN TO STORE.**  
**FOR SERVICE AND TECHNICAL ADVICE VISIT [WWW.PROLINEAUSTRALIA.COM.AU/CONTACT](http://WWW.PROLINEAUSTRALIA.COM.AU/CONTACT)**

---

Pro-line Australia  
PO Box 4187  
Norwood South LPO  
South Australia 5067

Email: [info@prolineaustralia.com.au](mailto:info@prolineaustralia.com.au)  
Web: [www.prolineaustralia.com.au](http://www.prolineaustralia.com.au)

Find us  
 [/prolineaustralia](https://www.facebook.com/prolineaustralia)  
 [@proline\\_australia](https://www.instagram.com/proline_australia)



Electrical Requirements:  
Australia / New Zealand 220-240V 50Hz  
Due to manufacturing alterations product  
may vary slightly from that pictured.

## OPERATION CONDITIONS & SAFETY PRECAUTIONS

### READ ALL INSTRUCTIONS CAREFULLY BEFORE OPERATION OF THE UNIT

- All components need to be installed in accordance with the user manual instructions for correct performance of the appliance.
- This appliance is not intended for use by persons (including children) with reduced physical, sensory or mental capabilities, or lack of experience and knowledge, unless they have been given supervision or instruction concerning use of the appliance by a person responsible for their safety.
- Appliance can be used by persons with reduced physical, sensory or mental capabilities or lack of experience and knowledge if they have been given supervisions or instruction concerning use of the appliance in a safe way and if they understand the hazards involved.
- Children should be supervised to ensure that they do not play with the appliance.
- Do not operate appliance with a damaged cord or plug or after the appliance malfunctions, or has been damaged in any manner.
- If the cord is damaged, it must be replaced by the manufacturer, its' service agent or similarly qualified persons in order to avoid a hazard.
- To protect against risk of fire, electric shock and personal injury, do not immerse cord, plugs, or Blender Base in water or other liquid.
- Unplug from outlet when not in use, before assembling or taking off parts and before cleaning.
- Do not use attachments not recommended or sold by the manufacturer as it may lead to fire, electric shock or injury.

**WARNING: RISK OF INJURY:** Keep hands and foreign objects out of the blending jug while the motor is running. Always switch the blender off at the wall socket and ensure the motor has stopped completely before disassembling.



## OPERATION CONDITIONS & SAFETY PRECAUTIONS

### IMPORTANT:

- Do not use appliance for other than intended use.
- Handle the cutting blade with care, especially during cleaning. Do not try and dismantle the blades from the blending jug, they are permanently fixed to the jug.
- Do not leave the appliance unattended when in use.
- Place the device on a level, nonslip surface suitable for the weight of the appliance.
- Do not use outdoors or on wet surfaces.
- Do not run the appliance without loading the blender jug.
- Do not run the appliance without ensuring the lid is securely in place.
- Do not put any parts into the dishwasher. NOT dishwasher safe.

### **WARNING: RISK OF INJURY:**

Do NOT blend HOT liquids. Jug is NOT compatible. Soup cannot be made in this blender as the lid does not vent steam.

## SAFETY FEATURES

Your Blender has 2 safety functions. Occasionally during the use of the Blender you may find that these safety functions have caused the unit to temporarily cease working. This is completely normal and is implemented to protect the user and unit from damage.

### Overheating Protection

The motor of the Blender is equipped with a temperature control device. If the motor or the blades turn too slowly due to solid food or lack of fluid there is a danger of the unit overheating. If your unit should switch off for that reason, unplug the Blender from the wall socket and move into a well-ventilated area. Allow the Blender to cool down for approximately 45 minutes, you can then recommence use.

### Auto Shut Down

The maximum running time of this Blender is 8 minutes. To prevent overuse or overheating of the appliance the Blender will automatically switch off after 8 minutes running time.

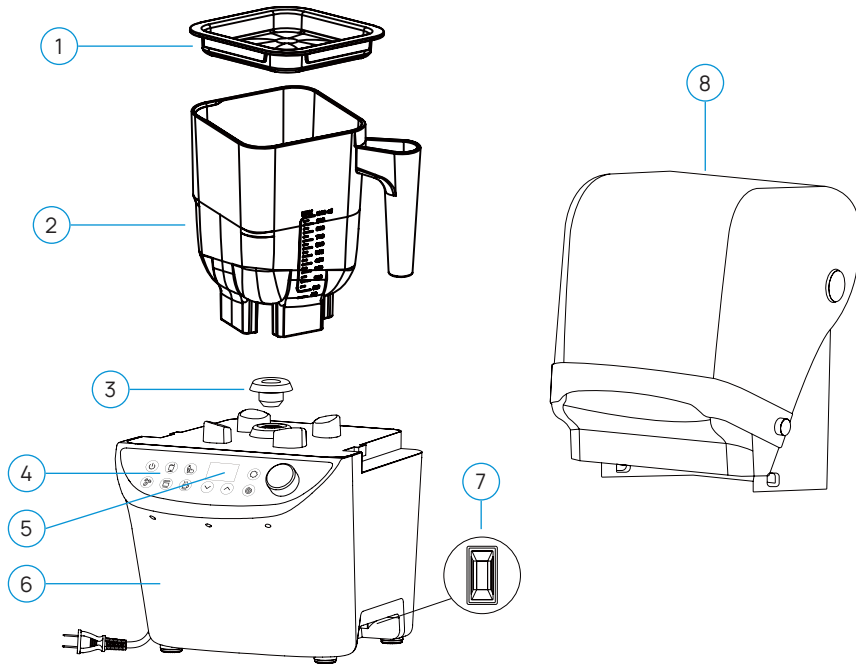
### Sensor for the Blender Jug

Blender is equipped with a safety sensor which detects when the blender jug has been seated onto the motor correctly. If the blender jug has not been assembled correctly you will not be able to operate the Blender. Due to safety reasons please do not attempt to bypass the sensor.

System Specifications	Pro-line Commercial Blender
Model Code	BL-1421Q
Product Dimensions	255 (L) X 280 (W) X 400 (H) mm
Product Weight	7.1KG
Power	1400W, 220-240V ~50Hz
Blender Jug	1L volume, BPA free plastic, stainless steel blade
Max. Running Time	8 minutes

## BL-1421Q PARTS IDENTIFICATION

1. Lid
2. Blender Jug
3. Coupler
4. Control Panel
5. Display
6. Blender Base
7. Power Switch
8. Sound Cover



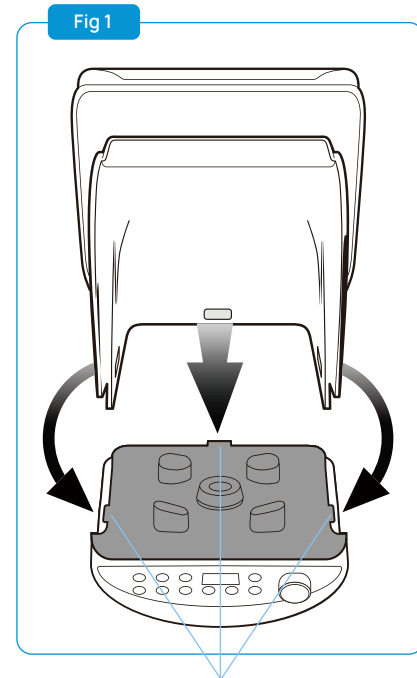
## SOUND COVER ASSEMBLY INSTRUCTIONS

1. Place the Blender base on a flat level surface.

**IMPORTANT:** The Blender Base comes with a black plastic cover installed over the Sound Cover attachment tabs. See Fig 1.

2. To use the Sound Cover, the black plastic cover needs to be removed. Place your fingers under the front section on both sides of the plastic cover, pull the cover outwards and lift upwards.
3. Install the Sound Cover onto the Blender base by aligning the 3 black tabs on the base to the 3 clear holes on the Sound Cover. See fig 1.
4. Assemble the Blender Jug onto the Blender base, ensuring that the jug is seated correctly.

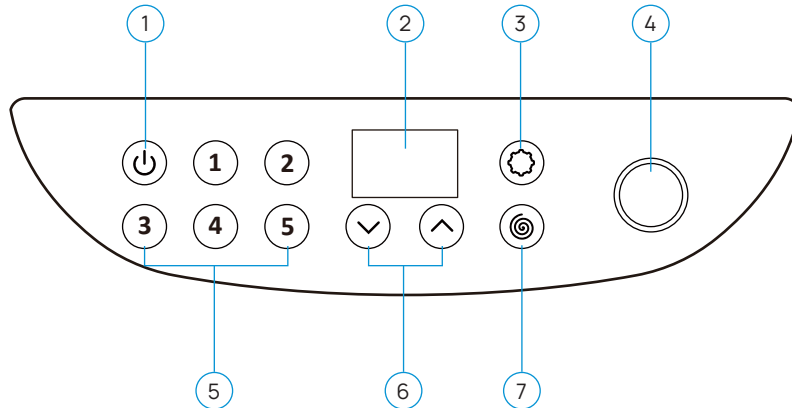
**NOTE:** If the Blender Jug is not seated onto the Blender base properly the Blender will not start.



Sound Cover Attachment Tabs

## BL-1421Q CONTROL PANEL

1. On/Off
2. Display
3. Write Program
4. Speed Dial
5. Programs
6. Time +/-
7. Pulse





## BL-1421Q CONTROL PANEL DESCRIPTION

Ref	Description
-----	-------------

- |    |   |
|----|---|
| 1. | <b>On/Off</b><br>Select a program, press On/ Off to start running the program.<br>When the motor is running pressing On/ Off will stop the Blender.<br><br>If the Blender is in power saving mode pressing On/ Off will return the Blender to ready mode. |
| 2. | <b>Display</b><br>Shows the time indicated by MM:SS followed by SPEED 0 to 30.<br><br>When a program is selected the first step parameters of the recipe is shown on the display.   |
| 3. | <b>Write Program</b><br>Use to write new programs for the Program keys numbered 1 – 5 (See page 12 for full details on writing programs).   |
| 4. | <b>Speed Dial</b><br>Turn Speed dial clockwise to gradually increase speed level. Turn Speed dial anti clockwise to reduce speed level. Speed levels 1 – 30. Press On/ Off to stop Blender at any time.   |
| 5. | <b>Program Keys 1-5</b><br>Program keys numbered 1 – 5 are pre-programmed blending cycles (See page 11 for full details on each program).<br><br>Pressing one of the Program keys will select that program. Press On/ Off to start the program.           |

Ref	Description
-----	-------------

- |    |  |
|----|--|
|    | Each Program key can be reprogrammed by using the Write Program function.  |
| 6. | <b>Time +/-</b><br>You can pre-set the running time by pressing the up and down arrow keys. A short press will increase/decrease time by 1 second. Press and hold to increase/decrease time in 10 seconds intervals. Time is shown on the display as MM:SS.<br><br>During a program or manual running mode, timer display will count down and automatically stop the blender when time is complete.<br><br>During manual use of Speed dial without a set time, the display timer will count upwards to show total time.<br><br>The maximum Blender running time is 8 minutes |
| 7. | <b>Pulse</b><br>Press and hold Pulse to quickly increase speed to the highest level. Motor will stop when the pulse key is released.<br><br>During a program or manual running mode, push Pulse to temporarily run at the highest speed. Original program speed will recommence after releasing the Pulse key.   |



## OPERATING INSTRUCTIONS

- Do not insert hands or items into the Jug while the blender is in use.
- Do not operate appliance with wet hands as it may cause an electric shock.
- Do not operate appliance prior to inserting ingredients.
- Do not operate appliance without the lid.
- Do not operate for more than 8 minutes at a time.

**IMPORTANT:** To protect the motor and provide you with a long lasting machine, the Blender has an auto shut down feature. If the components are not installed correctly the system will not operate. If the motor overheats due to extended use of the product the machine will automatically shut down. This is normal and prevents damage to your Blender. Refer to safety features on page 5.

1. Ensure the Blender is on a flat, level surface.
2. Plug in the Blender and turn on at the wall socket.
3. Turn the Power Switch On, located under the blender base on the right-hand side.
4. If the Blender Jug has been installed correctly you will hear a long beep and the control panel will light up.

**NOTE:** If the Blender Jug has not been installed correctly the display will not illuminate, the On/ Off will be in standby mode.

## USING IN MANUAL MODE

Before Blending always ensure the Blender Jug is installed correctly, the Lid is securely on and there are ingredients in the Blender Jug ready to Blend.

1. Directly turning the speed dial clockwise, will immediately start the Blender at speed 1. Continue to turn the speed dial clockwise to gradually increase speed from 1 to 30.
2. To reduce the speed, turn the speed dial anti-clockwise.
3. The display timer will start counting upwards to show total running time. Press On/ Off to stop the blender at any time or after 8 minutes of running time the blender will stop automatically.

### Time setting for manual mode

4. You can pre-set the total running time in manual mode using the Time +/- keys.
5. Set the blend time first. Press the Time +/- keys to set the desired time. A short push will increase/ decrease time by 1 second, holding down the key will increase/ decrease time in 10 second intervals. The blend time will be shown on the display.
6. After the time is set, turn the speed dial clockwise to start running the blender at desired speed.
7. The display timer will count down to 00:00 and automatically stop when the pre-set time is completed.
8. During the countdown the speed can be adjusted as needed. Press On/ Off to stop the blender at any time.

## USING A PROGRAM

Before Blending always ensure the Blender Jug is installed correctly, the Lid is securely on and there are ingredients in the Blender Jug ready to Blend.

1. Program 1 is the default setting for the machine, step 1 of Program 1 will be shown on the display at start up. To select a different program press another Program key, you will hear a short beep and the selected program will flash.
2. Press the On/ Off to start the program.
3. The program will run until finished. If required the program can be stopped at any time by pressing the On/ Off. The different steps of the program will be shown on the display and the remaining time for each step will count down.

## 5 PRE-SET PROGRAMS

Your Pro-line Blender comes with 5 pre-set modes.

Symbol	Program	Pre-set Program Description	Total Run Time
1	Ice Smoothies	Speed 20 for 10s, Speed 30 for 15s	00:25 seconds
2	Thick Ice Smoothies	Speed 10 for 25s, Speed 30 for 10s	00:35 seconds
3	Fruit/Vegetable Smoothies	Speed 30 for 40s	00:40 seconds
4	Soft Fruit/Vegetable Smoothies or Mixing	Speed 9 for 40s	00:40 seconds
5	Cleaning	Speed 30 for 5s, stop 2s Speed 30 for 5s, stop 2s Speed 30 for 5s	00:19 seconds

**NOTE:** Speed will gradually increase when each program starts.

## WRITING A PROGRAM

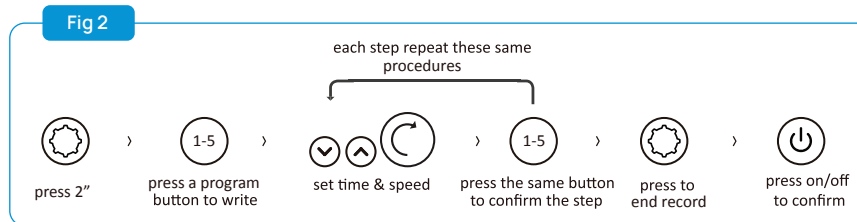
The Pro-line Blender has the ability to add alternative self-written programs onto each of the 5 Program keys. Program 1 is the default program for this Blender, therefore it is recommended that you use this Program for your most used recipe.

To write a program follow the below steps:

1. Press Write Program key for 2 seconds, you will hear a short beep. The 5 Program keys and Write Program key will flash. The display will show 00:00 time and SPEED 00.
2. Press the Program Number key for the Program number that you wish to write an alternative program for, the display will show 'step 01'.
3. Set the time for step 1 by pressing the time +/- keys, the display will show the time set.
4. Set the speed for step 1 by turning speed dial clockwise, the display will show the speed.
5. Press the flashing Program Number key to confirm the recording, the display will show 'step 02'.

**NOTE:** A speed does not have to be set if you wish for the blender to rest between steps. You can have a setting of 00 speed and 00:02 seconds for example.

6. Continue with the same method to enter each step of your own program. See figure 2.  
A maximum of 30 Steps can be recorded with a total running time of 8 minutes.
7. Ensure the last step of the recipe is confirmed by pressing the flashing Program Number key, then press the Write Program key to save the entire program.
8. All 5 Program keys will flash. You can either press another Program Number key to start writing another program or press On/Off key to exit the Write Program mode.
9. Any Program keys that you write a program for will be displayed with a red LED light.



### **Interchanging between original program and self-written program**

You can interchange between the original pre-set program and the self-written program, to do this press and hold any self-written Program key for 2 seconds. The LED colour of that key will change between RED and WHITE. RED indicates the self-written program is ready for use. WHITE indicates the original program is ready for use.

### **BLENDER OPERATING TIPS**

The Pro-line Blender is a great addition to any kitchen, allowing simple and quick preparation of drinks. The more familiar you are with your Pro-line Blender, the easier preparing dishes will be. Below are some tips that will help you get started.

- For best results, pour liquids and soft ingredients into the blender jug first followed by the harder ingredients such as ice cubes and leafy greens.
- Do not overload the unit nor add too little ingredients.
- To prevent spillage, do not put liquid in blender jug exceeding the MAX line.
- To avoid leaks, place the lid firmly on the Blending Jug.
- Blender Jug components come pre-assembled and should not be disassembled.



## CLEANING AND MAINTENANCE

This section provides important information for cleaning and maintenance of your Pro-line Blender. Please note the following safety guidelines before and during cleaning:

**WARNING: RISK OF INJURY:** The blades are SHARP! Care must be taken to avoid personal injury when cleaning

### IMPORTANT:

- Always switch off the appliance and remove the power plug from the socket before cleaning
- Do not immerse appliance in water or any other liquid.
- The Blender Jug is **NOT** suitable for the dishwasher.
- Do not try and dismantle the blades from the container, they are permanently fixed to the Jug.

### To clean Blender Jug

Fill the Blender Jug to no more than the maximum level with lukewarm water and add a drop of mild detergent. Place onto the Blender Base. Ensure the lid is securely on and select Program 5 - Cleaning.

Alternatively the Blender Jug can be washed under running water with a soft cloth and mild detergent.

Dry thoroughly before use.

### To clean the Blender Base

- Do **NOT** immerse the Blender base in water or any other liquid.

Clean the Blender Base with a soft damp cloth only.

**NOTE:** If water or liquid is left on the Blender Blade, it may cause discolouration to occur. This does not affect the structure or strength of the blade.

**TROUBLE SHOOTING:** BEFORE YOU EMAIL FOR SERVICE PLEASE REVIEW THE TROUBLE SHOOTING TIPS FIRST.

Problem	Possible Cause	Solution
No power to blender.	Appliance not plugged in/switched on.	Check the Blender is plugged in and the on/ off switch (located on right, underside of the blender base) is turned on.
	Incorrect assembly.	If the Blender Jug is not properly installed the unit will not turn on. Reinstall the Jug, the unit will beep when the jug is correctly installed.
Motor has stopped.	Ingredients stuck in blades.	If a large piece of ingredient is stuck at the bottom of the machine, switch the appliance off and remove blockage. <b>WARNING:</b> Blades are SHARP. Take care when removing blockages.
	Lack of fluid.	There is a danger of the unit overheating if there is a lack of fluid. Unplug the Blender from the wall socket and move into a well-ventilated area. Allow the Blender to cool down for approximately 45 minutes, you can then recommence use.
	Overuse of product has caused motor to shutdown as a safety precaution.	Unplug the Blender from the wall socket and move into a well-ventilated area. Allow the Blender to cool down for approximately 45 minutes, you can then recommence use.
Leaking.	Blender Jug has been overfilled.	Make sure the level of ingredients does not exceed the max fill line.
	Lid is not installed correctly.	Ensure the lid is seated correctly.



### **Your Pro-line Australian Commercial Repair or Replacement Warranty**

Pro-line warrants this appliance for 24 months on electrical parts and 12 months on Jugs and Blades.

Pro-line warrants this appliance to the first purchaser and subject to the stated conditions:

- The term "Commercial" when referring to our warranty is defined as use in a commercial setting or using the product on a commercial scale regardless of where the product is stored.

Warranty covers any defects in material or workmanship in the manufactured product within the first 24 months for electrical parts and 12 months for Jugs and Blades of a Commercial warranty, from the date of purchase.

**To make a warranty claim you must visit Pro-line online at [www.prolineaustralia.com.au/warrantyclaim](http://www.prolineaustralia.com.au/warrantyclaim)**

If a product is found to be faulty there is a 90 day return policy from the date of purchase. Products returned to store **MUST** be accompanied by a valid proof of purchase.

For warranty claims outside of 90 days from date of purchase, product will be repaired or replaced at our discretion. Repair or replacement costs of the product will be covered under warranty by Pro-line.

Goods presented for repair may be replaced by refurbished goods of the same type rather than being repaired. Refurbished parts may be used to repair the goods.

The benefits given to you by this warranty are in addition to other rights and remedies of the consumer law in relation to the goods or services to which this warranty relates.

Our goods come with guarantees that cannot be excluded under the Australian Consumer Law. You are entitled to a replacement or refund for a major failure and compensation for any other reasonably foreseeable loss or damage. You are also entitled to have the goods repaired or replaced if goods fail to be of acceptable quality and the failure does not amount to a major failure.



**Conditions Of This Warranty:**

1. This product has been fully installed in accordance with the user manual installation instructions.
2. The warranty extends only to repairing or replacing any component that proves to be defective in material or workmanship.
3. The warranty does not cover defects occasioned by misuse, alterations, accidents, or used for other than the intended purpose.
4. The warranty does not cover damage to the product caused by accident, fire, or floods, power surges or blackouts.
5. The warranty does not cover consumables.
6. Proof of purchase is required for warranty claims.

Please keep purchase receipt in a safe place.

**Pro-line Australia**

PO Box 4187

Norwood South LPO

South Australia 5067

[info@prolineaustralia.com.au](mailto:info@prolineaustralia.com.au)

[www.prolineaustralia.com.au](http://www.prolineaustralia.com.au)









Pro-line Australia  
PO Box 4187  
Norwood South LPO  
South Australia 5067

Email: [info@prolineaustralia.com.au](mailto:info@prolineaustralia.com.au)  
Web: [www.prolineaustralia.com.au](http://www.prolineaustralia.com.au)

Find us

 [/prolineaustralia](https://www.facebook.com/prolineaustralia)  
 [@/proline\\_australia](https://twitter.com/proline_australia)